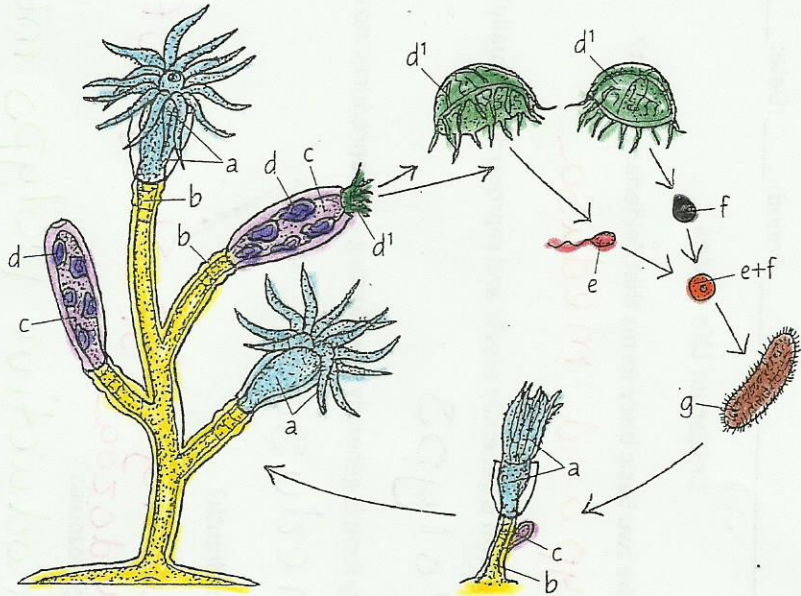


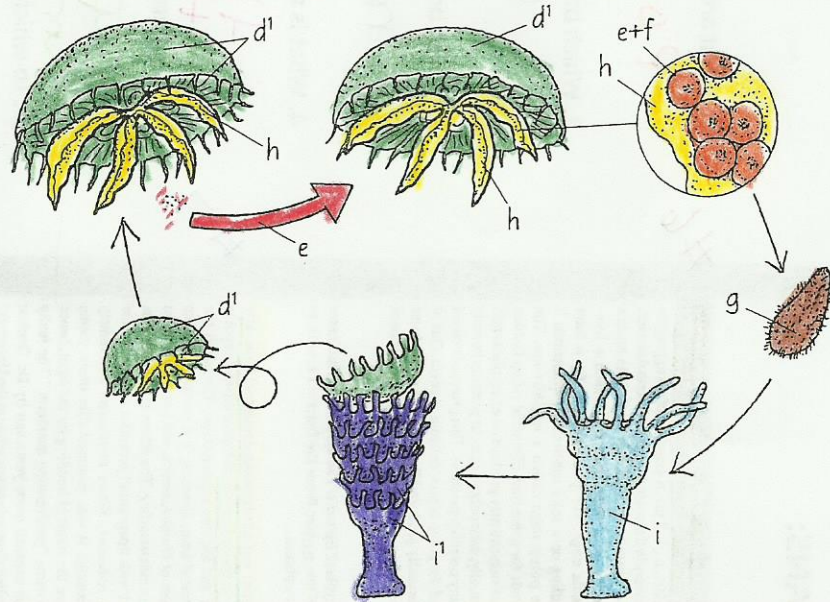
CNIDARIAN LIFE CYCLES

Miss Cunningham's
example

- OBELIA*
- COLONY*
- HYDRANTH^a
- STALK^b
- GONOOZOID^c
- MEDUSA BUD^d
- MEDUSA^{d'}
- SPERM^e
- EGG^f
- ZYGOTE^{e+f}
- PLANULA^g



- AURELIA*
- MEDUSA^{d'}
- ORAL ARM^h
- SPERM^e
- ZYGOTE^{e+f}
- PLANULA^g
- SCYPHISTOMA:
- STROBILA^{i'}



- EPIACTIS*
- ADULT*
- ORAL DISC;
- MOUTH^k
- TENTACLES^j
- COLUMN^m
- SPERM^e
- ZYGOTE^{e+f}
- JUVENILEⁿ

